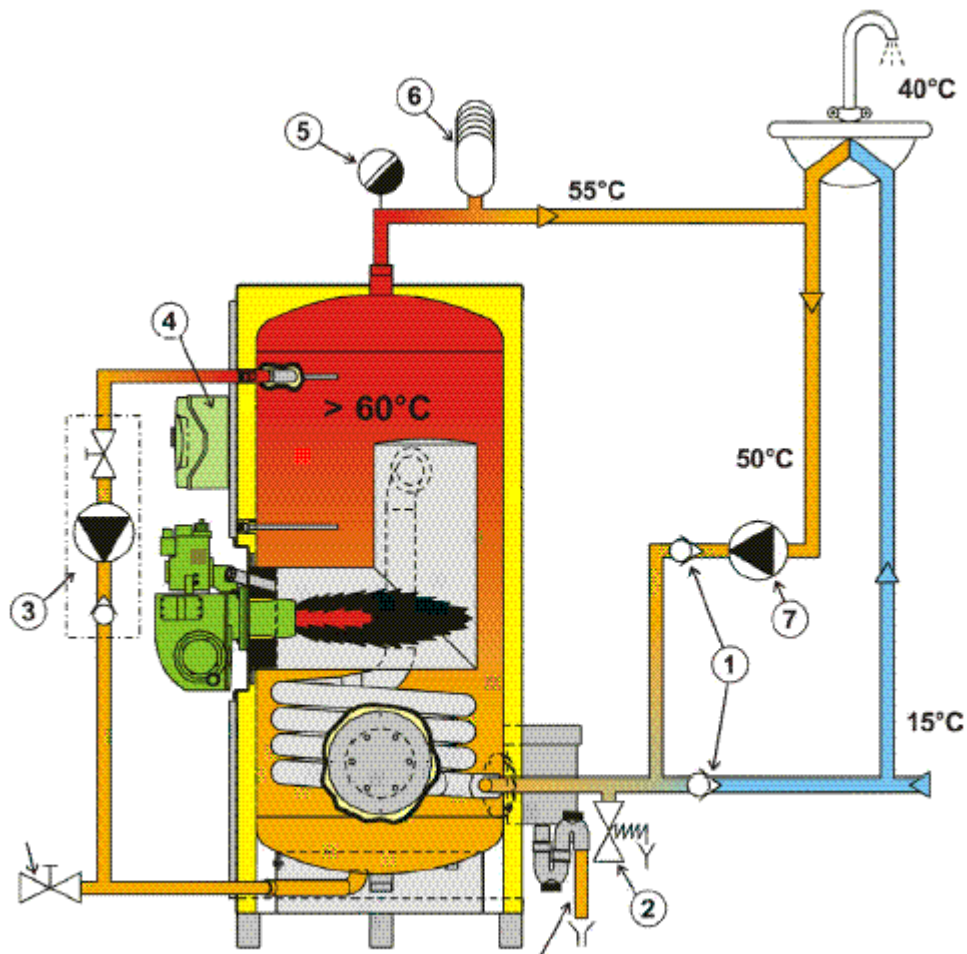


STANDARD PIPEWORK ARRANGEMENT



- 1 – Non return valve
- 2 – Pressure relief valve
- 3 – Anti-legionella package
- 4 – Electric panel
- 5 – Automatic air vent
- 6 – Pressure and temperature relief valve

- 7 – Secondary circulating pump
- 8 – Anti vacuum plug
- 9 – Ball valve
- 10 – Strainer
- 11 – Pressure regulating valve
- 12 – Expansion vessel