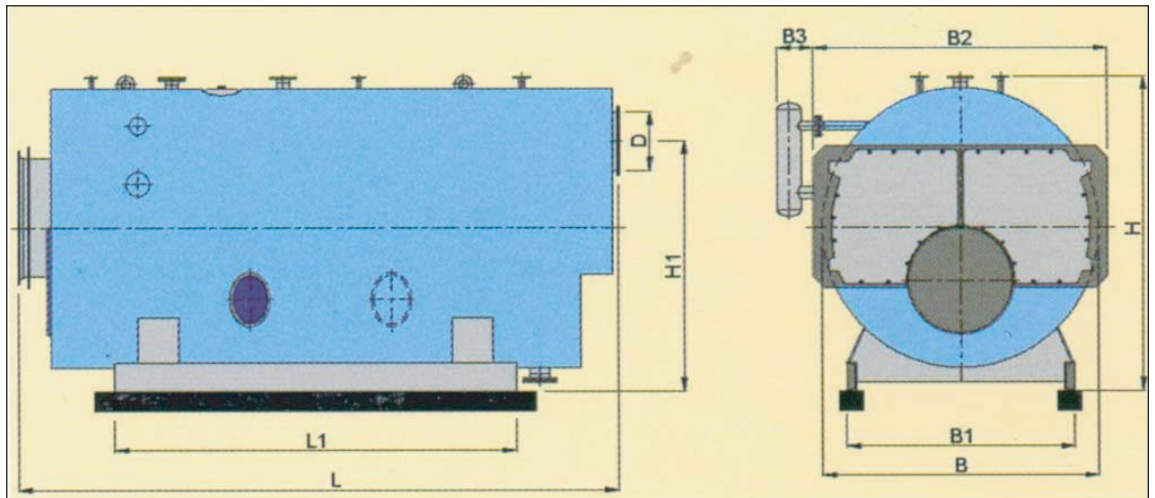
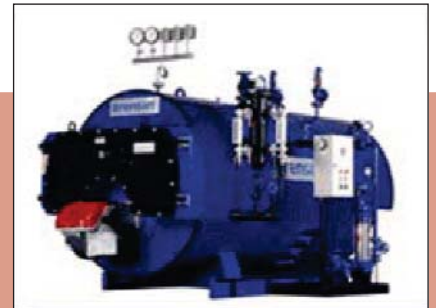


# HPS

## High pressure 3-pass wet-back steam boilers

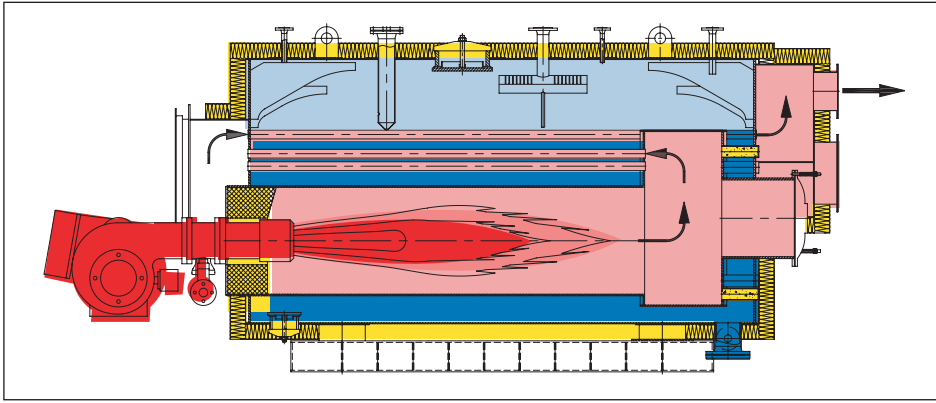
- Computer-aided design in compliance with latest CE Pressure Equipment Directives & EN Standards
- Large water and steam volumes - ready for peak demand and excellent for fluctuating demand
- Ample heating surface giving drier steam & greater heat absorption
- Low flue pressure drop and cleaner combustion
- Modulating low NOx gas, oil or dual fuel burners with 3:1 up to 10:1 turn-down ration
- 80% GCV minimum efficiency - increased by add-on air or water economiser

A TLANTIC  
 B OILERS  
 C  
 D B  
 E  
 F  
 G  
 H DR HPS HWR



STANDARDS

Directive:	97/23/EEC PED Modules B & F	Norms applied:	EN 12953
Electrical appliances:	89/336/EEC EMC, 73/23 EEC LVD	Certification:	EN 10204 - 3.1.C
Steel plate material:	P 295 GH & EN 10028 PART 1,2	Certification:	EN 10204 - 3.1.B
Tubes material:	P 235 GH & EN 10216 PART 2	Certification:	EN 10204 - 3.1.B
Flanges material:	P 265 GH & EN 1092 PART 1		



**OUTPUTS**  
 1200 kg/Hr to 25000 kg/Hr  
 815kW to 16980kW

**OPERATING PRESSURE**  
 6, 8, 10, 12, 14 & 16 BARS  
**OPERATING TEMP** 165°C to 200°C

## PERFORMANCE

Type HPS	1210	1512	2016	2520	3025	4030	5040	7055	8570	100/85	120/100	150/120	160/150	200/180	T-200/180	T-250/200
Steam output kg/hr	1200	1500	2000	2500	3000	4000	5000	7000	8500	10000	12000	15000	16000	20000	20000	25000
Heat output kW	815	1019	1358	1698	2038	2717	3396	4754	5773	6792	8150	10188	10867	13584	13584	16980
Gas Input m3/Hr	894	1117	1430	1788	2235	2682	3575	4916	6257	7598	8938	10726	13408	16089	16089	17877
Oil Input kg/hr	69	87	110	139	174	208	275	378	481	584	688	825	1021	1238	128	1375
Flue gas pressure mbar	5	6	7	8	8	8	8	8	8	9	9	10	10	10	10	11
Water content ltrs	3735	4440	5085	6080	6780	7985	10615	12510	16315	16410	17880	22300	25895	31025	30805	34140
Steam volume ltrs	905	1045	1180	1360	1530	1855	2340	2660	3810	3810	4070	5085	5920	7320	7790	10420
Dry Weight ton	4.7	5.3	6.2	7.2	8.1	9.6	12.2	15	18.8	21.5	23.9	27.8	34.6	42	42.7	47.7

## DIMENSIONS mm

Type HPS	1210	1512	2016	2520	3025	4030	5040	7055	8570	100/85	120/100	150/120	160/150	200/180	T-200/180	T-250/200
Length	4010	4295	4510	4890	5010	5290	5930	6150	6740	6895	7225	7600	8205	8705	7980	8600
L1	2450	2740	2740	3110	3140	3350	3850	3840	4450	4585	4860	5335	5840	6190	4215	4790
Width B	1852	1912	1995	2080	2180	2300	2470	2670	2880	2975	3100	3230	3400	3580	4030	4075
B1	1530	1550	1600	1670	1770	1870	2040	2050	2350	2360	2400	2560	2700	2860	3325	3500
B2	1980	2090	2170	2215	2350	2475	2690	2835	3080	3215	3340	3370	3535	3780	4295	4340
B3	295	250	260	290	255	235	275	275	335	315	270	380	456	435	250	250
Height	2127	2225	2305	2390	2490	2620	2775	2975	3230	3350	3470	3580	3745	3970	4526	4575
H1	1700	1810	1865	1950	2040	2135	2250	2410	2635	2685	2785	2850	2990	3225	-	-
D	300	300	350	400	450	500	600	700	750	800	850	950	950	1100	1100	1200

## CONNECTIONS mm

Type HPS	1210	1512	2016	2520	3025	4030	5040	7055	8570	100/85	120/100	150/120	160/150	200/180	T-200/180	T-250/200
Air Vent	20	20	20	25	25	25	25	25	25	25	25	32	32	32	32	32
Surface blow off	50	50	50	50	50	50	50	50	50	50	50	50	50	50	50	50
Blow-down	32	32	32	40	40	40	40	40	40	40	40	40	40	40	40	40

**Inlets and outlets are chosen specifically against the duty for each project. Contact Atlantic**

## SPECIFICATION

- Three pass wet back high pressure steam boiler
- Boiler sheet steel according to P295GH DIN EN 10028 and certified to DIN 50049,3-1-C
- Boiler seamless tubes of ST 35.8/1 according to DIN 17175 and DIN 2448 and certified according to DIN 50049,3-1-B. Seamless tube diameter 88.9mm O.D.
- Inside of front flue gas door filled with plastic type refractory cement over two coats of ceramic fibre blanket
- Spring loaded cast iron explosion door located in rear side of boiler
- Two flame observation glasses located to front and rear of boiler, Two blow down outlets, one to front and one to rear of boiler, Two independent safety valve outlets on top of the boiler
- Boiler shell insulated by 100mm minimum rockwool, then clad with 1mm cold drawn steel sheet and painted with industrial paint.
- Flue gas connection to top and rear side of boiler