

**OUTPUTS**  
46kW to 112kW

774 to 1892ltr/Hr

# M - MAX'O GAZ DIRECT-FIRED CONDENSING STORAGE WATER HEATER



Product Data No. 001106

- Efficiencies exceed 89%
- Gas or LPG pressurised burners
- Balanced flue option on all models
- Very low emissions of CO and NOx
- Generous stainless steel dhw buffer store

PERFORMANCE	45/400	55/700	69/700	69/1200	90/1200	110/1200
Output kW	45.0	55.0	69.0	69.0	90.0	110.0
Peak hot water output (10-60°C)						
Ltrs/min for 10 mins	74	121	124	195	200	205
Ltrs/1st Hr	893	1310	2078	1901	2400	2394
Ltrs continuous	774	946	1187	1187	1548	1892
Volume recovery rate - 10/60°C mins						
	31	46	36	60	45	37
Input kW	46.4	56.1	70.5	70.5	91.8	112.2
Gas used m3/Hr	4.86	5.94	7.45	7.45	9.12	11.8
LPG used m/Hr	1.88	2.3	2.88	2.88	3.76	4.6
Electricity (w)	200	200	200	200	200	200
Dry weight (kgs)	355	470	470	605	605	635
Water content (litrs)	390	720	720	1190	1190	1190
Max Pressure (bars)	7	7	7	7	7	7
HWS Pressure drop (kPA)	0.4	0.4	0.5	0.5	0.3	0.3

DIMENSIONS (mm)	45/400	55/700	69/700	69/1200	90/1200	110/1200
Height	1810	2150	2150	2300	2200	2200
Width	750	900	900	1100	1100	1100
Depth	1125	1280	1280	1485	1485	1485
Flue Outlet	430	490	490	500	500	500

CONNECTIONS (mm)	45/400	55/700	69/700	69/1200	90/1200	110/1200
Flue Outlet	200	200	200	200	200	200
Gas Inlet	20	20	20	20	20	20
Cold Feed	32	50	50	50	50	50
Hot Outlet	50	50	50	50	50	50
Hot Return	32	50	50	50	50	50
Drain Outlet	32	32	32	32	32	32
Condensate Outlet	32	32	32	32	32	32
Anti-Legionella	25	25	25	25	25	25

### SPECIFICATION

#### Heat Exchanger

- stainless steel combustion chamber
- stainless steel coils of flue tubes
- an access door with ceramic fibre insulation and flame inspection point

#### Stainless Steel Hot Water Store

- cold water feed inlet
- hot water supply outlet
- re-cycling outlet
- drain outlet
- three sensor points

#### Enclosing Jacket

- 50mm thick glass silk thermal insulation
- enamelled steel jacket in four removable sections

#### Pressurised Gas Burner

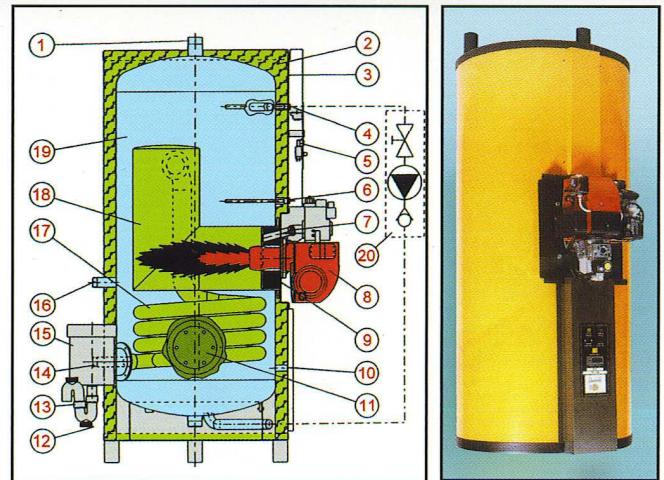
- aluminium body
- motorised fan air supply
- gas valve with controlled rate of opening
- ignition transformer
- air/gas mixing combustion head
- differential pressure switch
- ignition pressure switch
- control box with ionisation flame protection
- balanced flue pressure switch control

#### Control Panel

- stop/start switch with indicator lamp
- thermometer 0 - 120°C
- high/low water thermostat
- limit water thermostat set at 95°C

#### Optional Item

- anti-legionella pump assembly

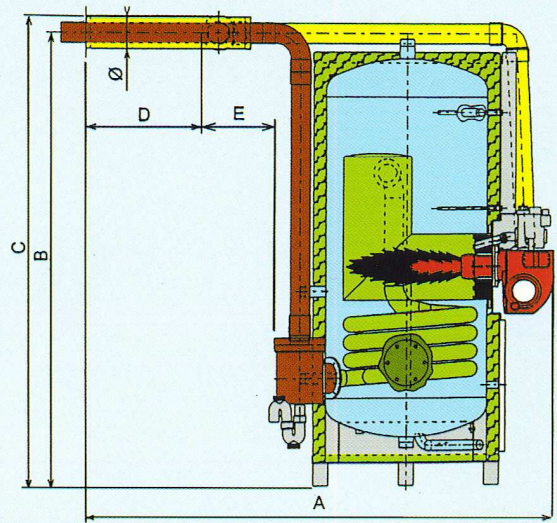


- |                            |                             |
|----------------------------|-----------------------------|
| 1. Hot water outlet        | 11. Inspection cover        |
| 2. Mineral wool insulation | 12. Drain point             |
| 3. Outer jacket            | 13. Condensate outlet       |
| 4. Limit thermostat        | 14. Cold water inlet        |
| 5. Control panel           | 15. Flue outlet             |
| 6. Control thermostat      | 16. Hot water return        |
| 7. Inspection glass        | 17. Heat exchanger          |
| 8. Burner                  | 18. Combustion chamber      |
| 9. Refractory              | 19. Hot water storage       |
| 10. Anti-Legionella point  | 20. Anti-Legionella package |

### STANDARD BALANCED FLUE

(Balanced flue lengths up to 10metres are available)

Dim (mm)	A	B	C	D	E	O
45/400	1885	1830	1900	470	290	125
55/700	2050	2170	2250	470	300	160
69/700	2050	2170	2250	470	300	160
69/1200	2255	2220	2300	470	300	160
90/1200	2255	2220	2300	470	300	160
110/1200	2255	2220	2300	470	300	160



**FOR  
FREE  
ADVICE**

**CALL: 0161 344 5664**  
**Or: 020 7237 4912**  
**Or Fax: 0161 339 8136**  
Box 11, Ashton Under Lyne, OL6 7TR.

**2000  
ATLANTIC**