

HBI-A20

FLOOR STANDING OR
WALL HUNG COMBI
ELECTRIC BOILERS

EASY INSTALLATION
INTO DIFFERING SPACES

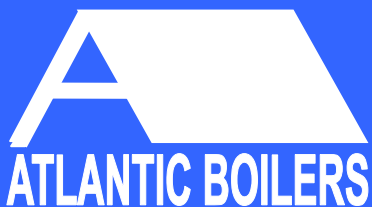
- UNDER STAIRS
- IN ATTICS

QUIET OPERATION

NO FLUES

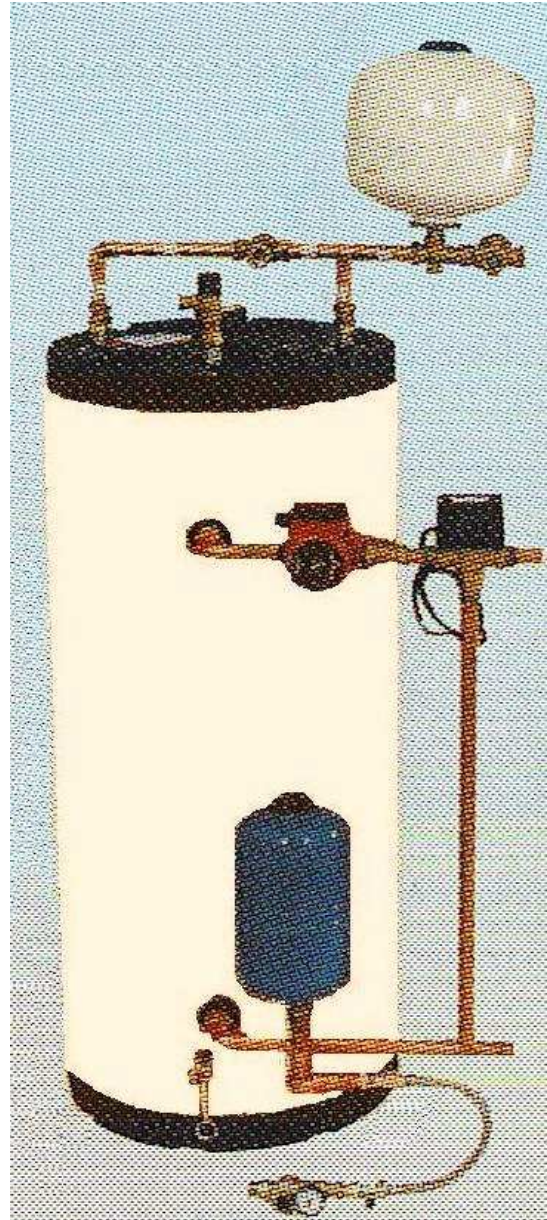
NO POLLUTION

PRECISE CONTROLS GIVE
LOW RUNNING COSTS



HBI-A20

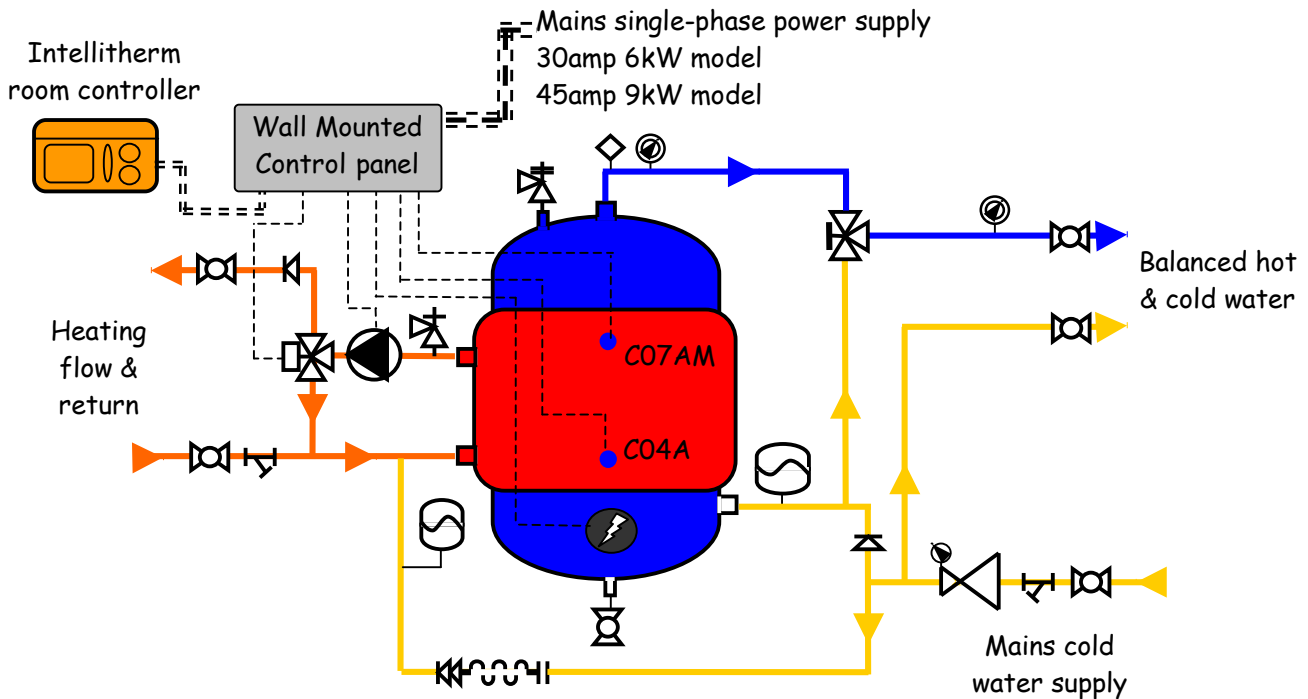
FLOOR STANDING OR
WALL HUNG COMBI
ELECTRIC BOILERS



www.atlanticboilers.com
info@atlantic2000.co.uk

Tel 0161 621 5960 Fax 0161 621 5966
Box 11, Ashton-under-Lyne, OL6 7TR

The ATLANTIC HBI-A20 Electric Combination Boiler contains a store of Domestic Hot Water ready for immediate use and, also, supplies Space Heating to a number of radiators or underfloor heating. The system consists of the Boiler, the Control Panel, Domestic Hot Water & Space Heating fill systems and a heating pump. The items arrive loose for fitting by the installer into the available space, followed by setting to work. A site commissioning and extended guarantee is available from ATLANTIC 2000 at a fixed fee.



CHARACTERISTICS													CONNECTIONS	
Input (85°C)	Input (85°C)	Peak Hot water output control at 85°C, DHW 10°C to 45°C,	Hot water volume recovery 10°C to 45°C	Efficiency	Space heating flow rate	Available pump head	Dry weight	DHW volume	Space heating volume	Height	Diameter	Primary	Secondary	
kW	BthU/Hr	ltr/min for 10 minutes	mins	% GCV	l/sec	kPA	kg	litres	litres	mm	mm	mm	mm	
HBI-A20 6 kW/150 litres	6 kW	20,500	12.5	60	99.5	0.15	30	55	150	7	1170	500	20	20
HBI-A20 6 kW/200 litres	6 kW	20,500	15.9	70	99.5	0.15	30	75	200	10	1120	570	20	20
HBI-A20 9 kW/200 litres	9 kW	30,700	19.2	50	99.5	0.15	30	75	200	10	1120	570	20	20

SPECIFICATION

The inner vessel is fabricated from 316L austenitic stainless steel, fitted with dished ends and argon-arc welded using the tungsten inert gas process. It is then corrugated and finally de-stressed and surface treated. The outer vessel is also made from 316L stainless steel and is fitted around the inner vessel. Overall insulation is 30mm thick polyurethane foam with a hard polystyrene outer case enamelled in white.

Two or three 3kW 240V immersion heaters in accordance with BS EN 60335-2-7 having long life incoloy immersion elements and thermostats.

A package of ready-to-fit components are provided with the vessel: A heating circulating pump with cast iron body, stainless steel rotor & can, ceramics, carbon, aluminium & EPDM outer components, a heating 3-port rotary valve suitable for diverting primary hot water in a closed circuit application, an unvented DHW kit with pressure regulating valve, non-return valve, expansion vessel, a temperature & pressure relief valve and a set of copper pipes cut to length with necessary fittings.

Controls are: A blending valve, a wall-mounted weekly temperature controller in compliance with CEI EN 60730-1-2, 8amp switching capacity, comfort & economy control settings (2°C to 62°C, Δ 0.25°C), two year battery standby life, summer/winter modes, a wall-mounted control panel comprised of: A polycarbonate enclosure to Ip67, a heavy duty contactor & control relay, DIN-rail terminals and a 24-hour control on the incoming single phase electrical.